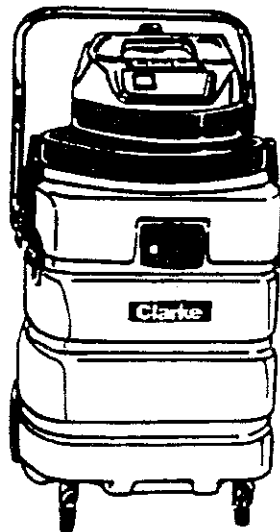




Operator's Manual
Manuel d'utilisation
Libro de Instrucciones



PTV-15

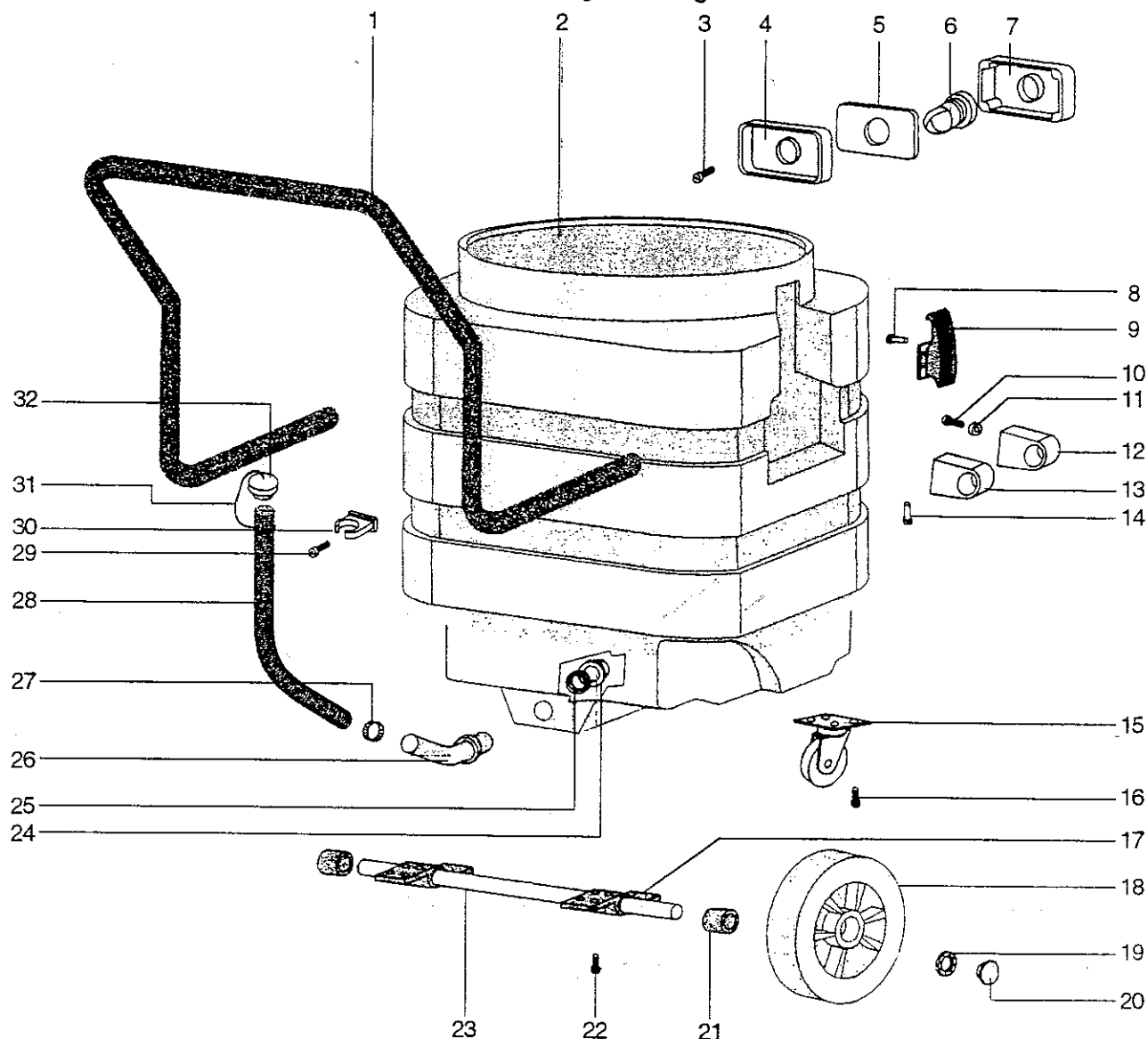
READ THIS BOOK

This book has important information for the use and safe operation of this machine. Failure to read this book prior to operating or attempting any service or maintenance procedure to your ALTO machine could result in injury to you or to other personnel; damage to the machine or to other property could occur as well. You must have training in the operation of this machine before using it. If you cannot read English, have this manual explained fully before attempting to operate this machine.

All directions given in this book are as seen from the operator's position at the rear of the machine.

For new books write to: ALTO U. S. Inc., 2100 Highway 265, Springdale, Arkansas 72764.

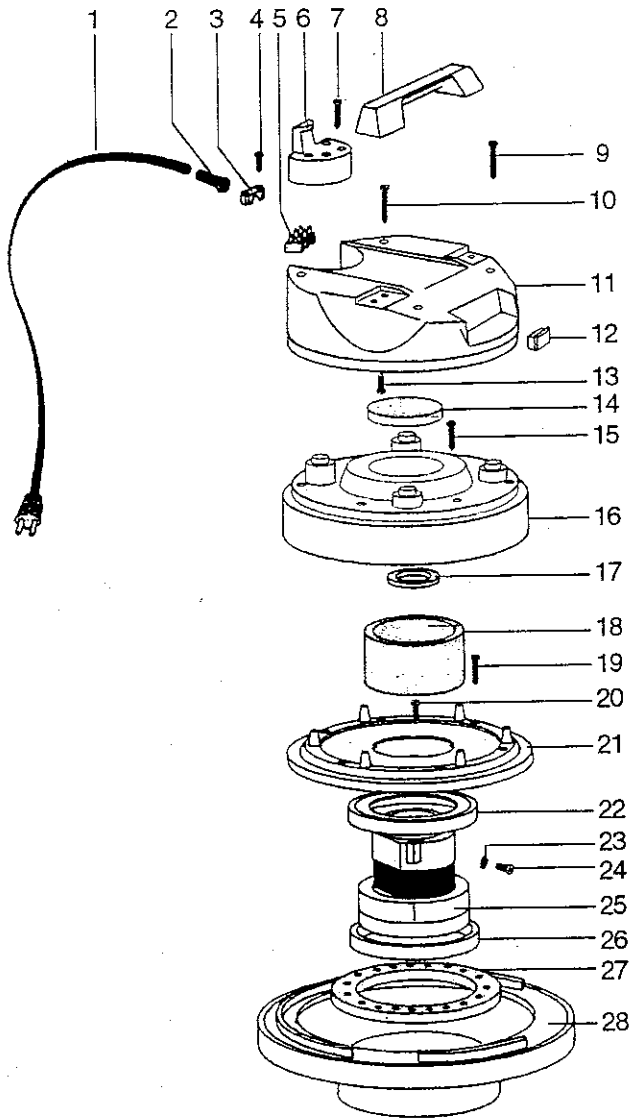
CLARKE TECHNOLOGY PTV-15
Poly Tank & Carriage Drawing & Parts List 1/98



Ref.	Part No.	Description	Qty
1	54915A	Handle, Transport Poly	1
2	58922A	Tank, Poly 15 Gallon	1
3	56481A	Screw, 5mm x 30mm	4
4	54345A	Gasket, Hose Adapter	1
5	54376A	Gasket, Tank Adapter	1
6	53166A	Deflector, Tank	1
7	50337A	Adapter, Hose	1
8	57376A	Rivet	4
9	51823A	Clamp, Tank	2
10	56482A	Screw, 5mm x 35mm	8
11	87055A	Washer	8
12	56491A	Support, Handle	2
13	56490A	Support, Handle Middle	2
14	57374A	Rivet	2
15	52120A	Caster, Swivel	2
16	56489A	Screw, 4mm x 15mm	8

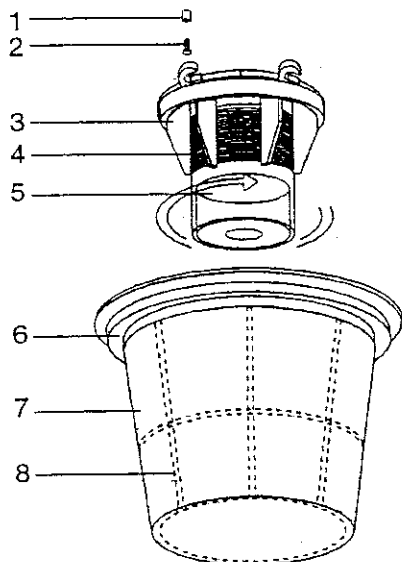
Ref.	Part No.	Description	Qty
17	56488A	Support, Axle	2
18	59939A	Wheel, Transport	2
19	57379A	Retainer, Wheel	2
20	52067A	Cap, Hub	2
21	58525A	Spacer, Wheel	2
22	56441A	Screw, 5mm x 20mm	8
23	50143A	Axle, Wheel	1
24	56289A	Nut, Pipe	1
25	54344A	Gasket, Tank	1
26	50203A	Adaptor, Drain	1
27	722030	Clamp, Hose	1
28	54888A	Hose, Drain	1
29	58413A	Screw, 5mm x 20mm	1
30	51846A	Clamp, Hose	1
31	56487A	Support, Drain Plug	1
32	57143A	Plug, Drain Hose	1

**Clarke® PTV-15
Head Assembly Drawing & Parts List 1/98**



Ref.	Part No.	Description	Qty
1	51841A	Cord, Power	1
2	56448A	Strain Relief	1
3	54503A	Grip, Cord	1
4	56441A	Screw 5mm x 20mm	2
5	50522A	Block Terminal	1
6	51842A	Hook, Cord	1
7	56481A	Screw, 5mm x 30mm	4
8	54914A	Handle, Lift	1
9	56482A	Screw, 5mm x 35 mm	2
10	56482A	Screw, 5mm x 35 mm	2
11	51843A	Cover, Dome	1
12	47316B	Switch, Rocker	1
13	56441A	Screw, 5mm x 20mm	4
14	54064A	Filter, Upper	1
15	56482A	Screw, 5mm x 35mm	6
16	51844A	Cover, Motor	1
17	57877A	Ring, Vac Motor	1
18	54063A	Filter, Motor	1
19	56483A	Screw, 5mm x 40 mm	6
20	56441A	Screw, 5mm x 20 mm	4
21	56484A	Support, Motor	1
22	54377A	Gasket, Vac Motor	1
23	59859A	Washer, Star	1
24	56485A	Screw, 4mm x 8mm	1
25	56039B	Motor, Vac 115V	1
	56046B	Motor, Vac 230v	1
	40834A	Brush, Carbon 115V	1
	40835A	Brush, Carbon 230V	1
26	54377A	Gasket, Vac Motor	1
27	57876A	Ring, Lower	1
28	50532A	Base, Motor	1

**Clarke® PTV-15
Filter Bag & Float Assembly Drawing & Parts List 1/98**



Ref.	Part No.	Description	Qty
1	58541A	Spacer, Plastic	4
2	58411A	Screw, 5mm x 25mm	4
3	57856A	Cage, Float	1
4	58073A	Screen, Filter	1
5	53981A	Float	1
6	57848A	Ring, Support	1
7	50720A	Bag, Filter	1
8	56492A	Support, Bag	1

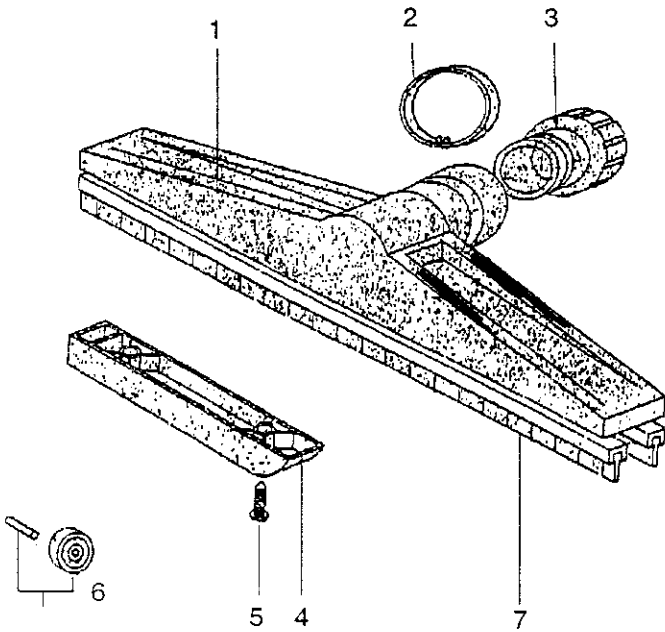
To add optional filters for PTV-15 order:
 54015A Filter, HEPA 1 and 57372A Retainer 1
 or
 53982A Filter, Cartridge 1 and 57372A Retainer 1

**CLARKE TECHNOLOGY PTV-15
Wet Vac Tools Parts List 6/97**

Part No.	Description
55382A	Tool Kit
59213B	Tool, Squeegee
59214B	Tool, Floor Brush
59215A	Tool, Crevice 38mm
57503A	Reducer, Wand
59860A	Wand, Extension 2 Pc.
59861A	Wand, Chrome 2 Pc.
54887A	Hose, 38mm 2.5m

*S0341A
- HOSE END FOR TANK*

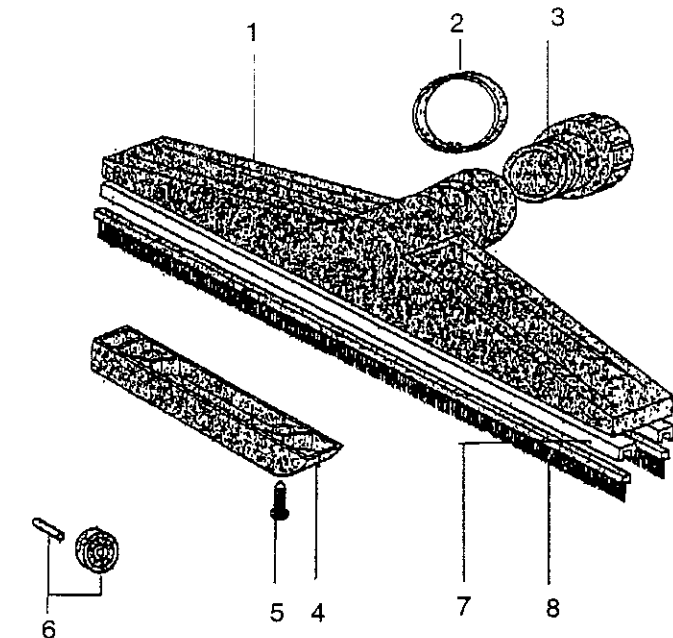
**CLARKE TECHNOLOGY PTV-15
Squeegee Tool Drawing & Parts List 12/97**



Squeegee Tool - 59213B

Ref.	Part No.	Qty	Description
1	50753A	1	Body, Tool
2	57873A	1	Ring, Floor Tool
3	50357A	1	Adapter, Floor Tool
4	53096A	2	Support, Floor Tool
5	88001A	4	Screw, 5mm x 15mm
6	59970A	2	Wheel & Axle
7	53097A	2	Squeegee Blade

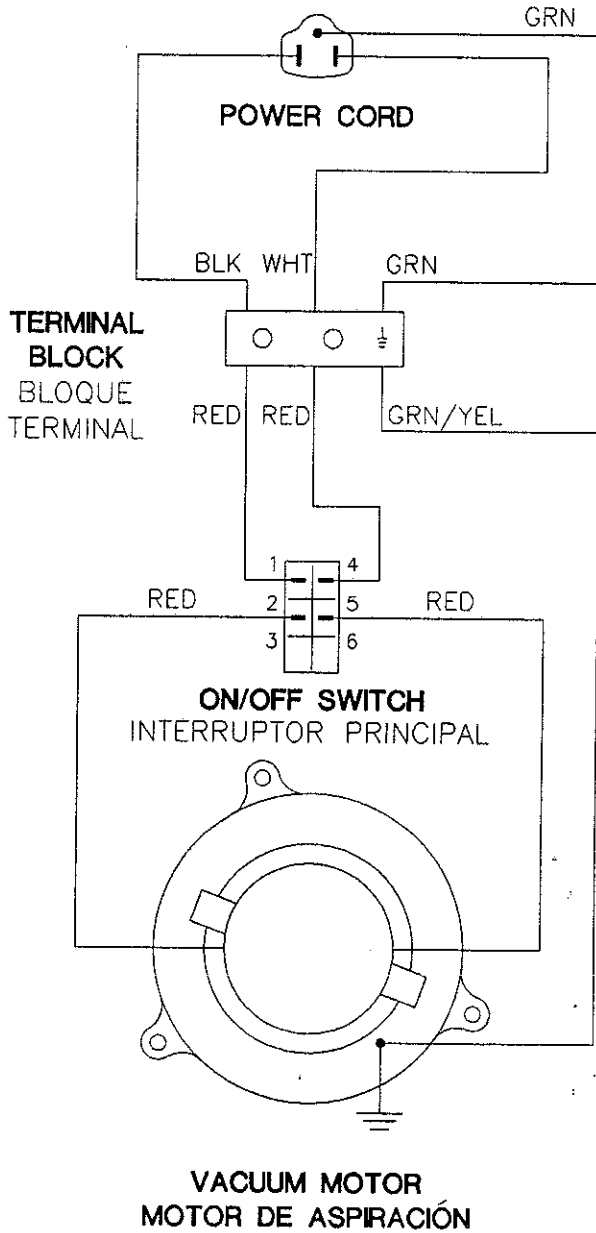
**CLARKE TECHNOLOGY PTV-15
Floor Brush Tool Drawing & Parts List 12/97**



Floor Brush Tool - 59214B

Ref.	Part No.	Qty	Description
1	50753A	1	Body, Tool
2	57873A	1	Ring, Floor Tool
3	50357A	1	Adaptor, Floor Tool
4	53096A	2	Support, Floor Tool
5	88001A	4	Screw, 5mm x 15mm
6	59970A	2	Wheel & Axle
7	51716A	1	Brush Guide
8	51717A	1	Brush Strip, Serrated

VANTAGE LINE TANK VACS



02087A
PART NO.

Clarke
INDUSTRIES, INC.
2100 HWY. 265 SPRINGDALE, ARKANSAS USA 72764-8780

DESCRIPTION
CONNECTION DIAGRAM

MODEL P.T.V. 15 SIM. TO
SCALE FULL DRN/ BY JAF APV/O. BY JDH DISK
DATE 9-28-94 DATE 9-28-94 NO. ??
MATERIAL FINISH

B 1 SHEET OF 1 DRAWING NO. 02087A REV. A

UNLESS OTHERWISE SPECIFIED:
ALL DIMENSIONS ARE IN INCHES
1 PLACE DECIMALS ±.5
2 PLACE DECIMALS ±.03
3 PLACE DECIMALS ±.010
ANGLES ± 0° 30'(5 DEGREE)



CRITICAL NOTE
OR DIMENSION

REMOVE ALL BURRS AND
BREAK SHARP EDGES

NOTICE: THIS DRAWING AND ANY COPY THERE OF ARE
STRICTLY CONFIDENTIAL AND REMAIN THE SOLE
PROPERTY OF CLARKE INDUSTRIES, INC. ANY
UNAUTHORIZED USE ARE PROHIBITED UNLESS APPROVED
IN WRITING BY THE CORPORATION.

DATE	BY	E.C.N.	DATE
	**	**	
	REL FOR PROD		
	CHANGE		